



**REBUS**  
ENGINEERING  
SERVICES

# WHO WE ARE PROFILE

**Rebus Engineering Services is a leading independent consultancy offering a comprehensive range of civil and structural engineering design services throughout the UK and internationally.**

Our dedicated, enthusiastic and highly qualified team will find the appropriate solution to meet the client's design aspirations. We ensure rapid problem solving and adaptability in implementing new options when projects change, offering a highly flexible approach.

We believe that communication is a key factor for the success of the project.

Rebus' aim is to work together with other members of the design team such as the MEP engineers, architects, contractors and clients to explore, coordinate and develop cost-effective solutions.

According to the project progression, we provide the necessary assistance to ensure the project's realization on time.

Whether we are involved in the preliminary concept stage, site investigation, planning, feasibility study or construction work; Rebus Engineering services provide a distinctive, professional and quality service.



**We believe that communication  
is a key factor for the success  
of the project**



# WHAT WE DO

## ENGINEERING DESIGN

**Rebus Engineering Services has a broad portfolio of engineering experience ranging from Retail and Residential through to Commercial and Transport projects.**

Our team has an in-depth knowledge and range of expertise to successfully design buildings of any type, supervise throughout all of the project construction stages and ensure that the desired quality is delivered from conception to completion.

We believe that Sustainability is an essential ingredient of all innovative projects, adding value to developments wherever possible. We can provide technologically advanced design, cutting-edge thinking and compliance with the latest national and international design codes and standards.

At Rebus Engineering Services, we work side-by-side with the design team members to deliver the most appropriate and cost-effective results for our clients.

**Our wide range of services offered cover the entire life cycle of any building project and include:**

- **STRUCTURAL DESIGN**
  - **CONSTRUCTION SUPPORT**
  - **PROJECT MANAGEMENT**
- 

We work side-by-side with the design team members to deliver the most appropriate and cost-effective results for our clients



# Westfield Milan

The new Westfield Milan, joint venture with an Italian shopping centre developer, represents the largest shopping centre in Europe on an area of 170,000 m<sup>2</sup> comprising restaurants, shops, luxury shops area, car park, cinema and leisure centre. While working for MPN UK, main structural consultant, we developed the scheme design including the earthquake analysis, foundation design for the entire project.

**Architect:** Leonard Architect/Buchan

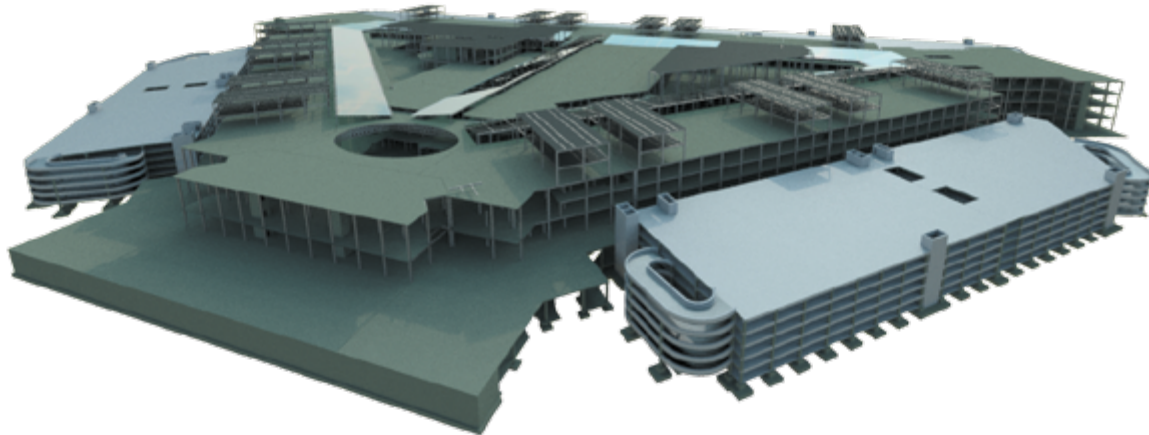
**Structural Consultant:** MPN UK

**Location:** Milan, Italy

**Client:** Westfield

**Type:** Retail

**Project value:** €1.25bn



# Abu Dhabi Investment Council

29-storey twin office towers in Abu-Dhabi, United Arab Emirates to accommodate 1,000+ employees. Design, which included steel frame for both towers and RC car park, was taken from concept to completion. Design included RC frame, retaining walls and foundation and Steel frame including composite members, complex geometry modelling and analysis.

**Architect:** Aedas

**Structural Consultant:** Arup UK

**Location:** Abu Dhabi, UAE

**Client:** Government of Abu Dhabi

**Type:** Mixed-Use, Office

**Size:** 11,500m<sup>2</sup>

**Project value:** £1.4bn



# Varesine Project

Structural Design Service on the thirteen-storey office building with large atrium, ten- storey of RC and two of steelwork in concrete and steel and undertook design of all steelwork including façade frame, roof structure, steel/composite frame, scenic lift frame, trusses and steel-concrete connection.

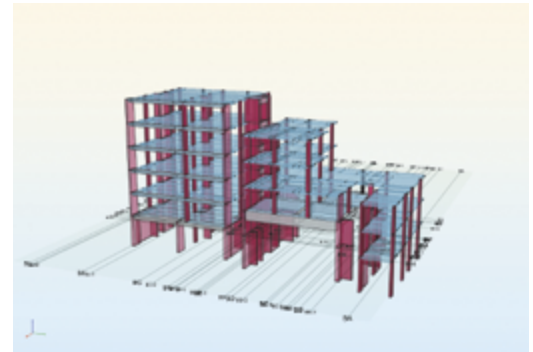
**Architect:** Pelli-Clarke, KPF, Boeri Studio, Jacobs  
**Structural Consultant:** Arup Italy  
**Location:** Milan, Italy  
**Client:** Hines Group  
**Type:** Mixed-Use, Office, Residential  
**Size:** 360,000 m<sup>2</sup>  
**Project value:** €860m



# Harper Road Development

The project consisted of an L shaped RC frame Residential Buildings. Selected to provide design service for this large Residential Redevelopment structure in Central London. Involved from concept to completion responsible for structural and civil engineering design.

**Architect:** dRMM  
**Structural Consultant:** Yes Engineering  
**Location:** London, UK  
**Client:** Mosaic Family Developer  
**Type:** Residential  
**Project value:** £11m





# London Bridge Redevelopment

Design services within the re-development of London Bridge Station project. Project aims to increase the number of people using the terminal. Appointed by WSP Group to work on the platform and canopy to design the 15 precast concrete platform, bridge deck platform and RC concrete members design. Separately involved on the design and review of the existing structures such as masonry arches, steel buildings, new concrete elements.

**Architect:** Grimshaw

**Structural Consultant:** WSP Group

**Location:** London Bridge, London

**Client:** Thameslink

**Type:** Rail

**Project value:** £500m



INFRASTRUCTURE/TRANSPORT

## 2 Kingdom Street

Structural Design Service on the thirteen-storey office building with large atrium, ten-storey of RC and two of steelwork in concrete and steel and undertook design of all steelwork including façade frame, roof structure, steel/composite frame, scenic lift frame, trusses and steel-concrete connection.

**Architect:** KPF

**Structural Consultant:** ARUP UK

**Location:** London, UK

**Client:** Development Securities

**Type:** Mixed-Use, Office

**Project value:** £90m



COMMERCIAL



## Aman Resort “Playa Grande”, Dominican Republic

High profile resort in the Dominican Republic. Structural design was required to conserve the local ecological whilst providing large communal spaces and minimal-impact accommodation via a low-density design.

Project was taken from concept to detailed structural design with full consideration of seismic and hurricane analysis and final strength analysis due to its location.



## Brighton and Sussex University Hospital

NHS 3Ts program to modernize the Royal Sussex County Hospital in Brighton. Provided concept design of the helicopter landing pad.

Appointed to provide full range of civil and structural design services for the Helipad Structure and the “Trauma Centre” building.



## Cornelius and Castle View Schools, Essex

Public projects consisting of designing extension buildings of 4 School Buildings in Essex. Carried out concrete design work and in particular FE slab design, columns, foundations pile caps, concrete detailing and steel estimation.

Project management to achieve quality and the appropriate standards required from the architect and the Client.





+44 (0) 203 770 9019  
[info@rebusengineering.com](mailto:info@rebusengineering.com)  
[www.rebusengineering.com](http://www.rebusengineering.com)

